

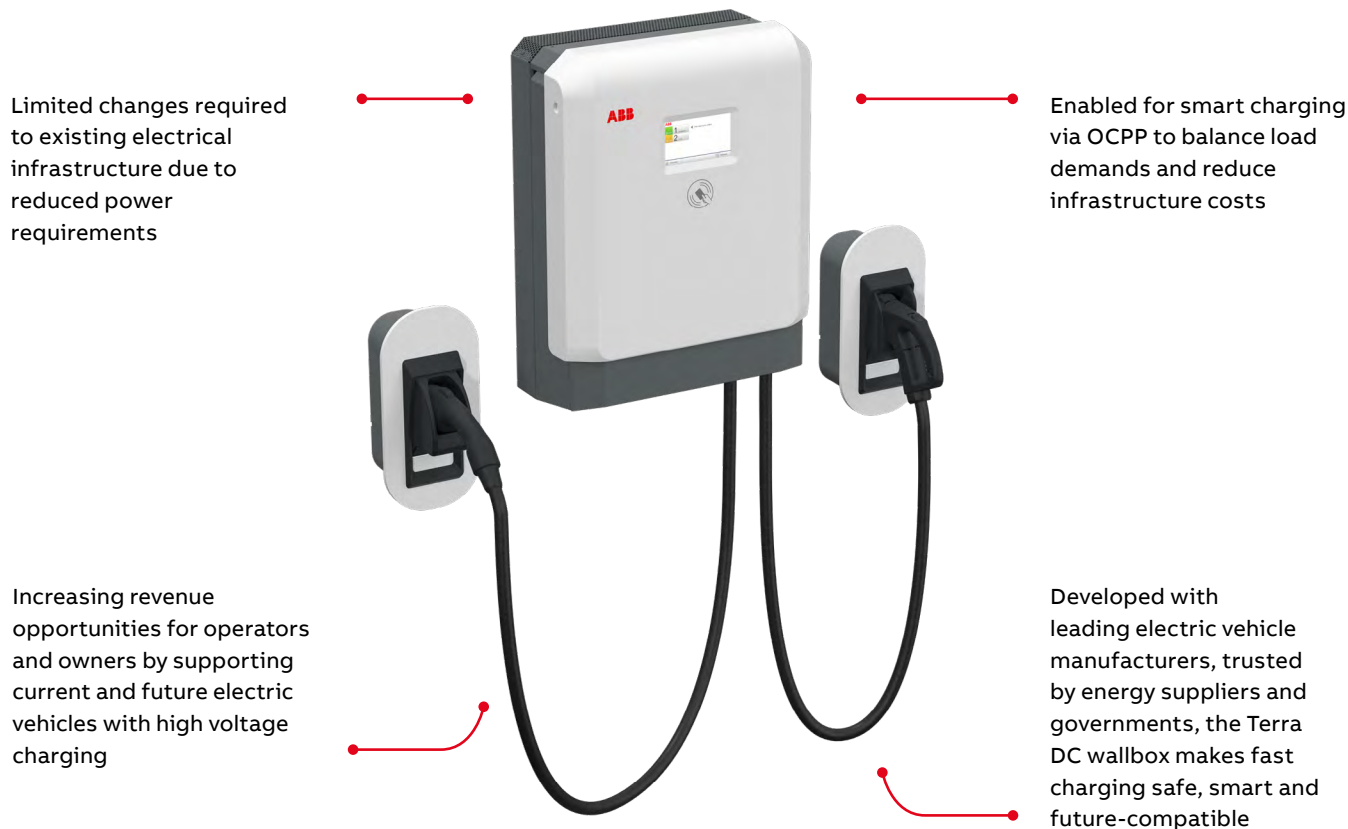


EV Charger Spec Sheet

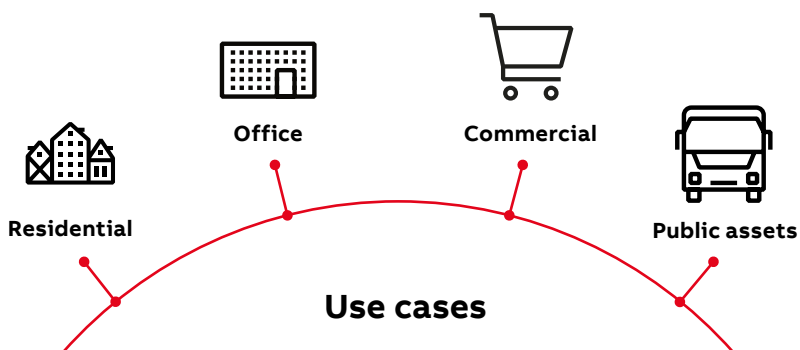
ABB Terra DC 24kW wallbox
DC Fast EV Charger

Terra DC wallbox

The smart e-mobility investment



Terra DC wallbox is a future-proof investment supporting current and future EVs with high voltage charging, applicable to a wide variety of use cases, in an ultra-compact footprint, that is safe and reliable, for residential use too.



Residential
Multi-tenant homes, residential communities

Office
Small and large offices, business parks and complexes

Commercial
Hotels & hospitality sports institutions, shopping centres, commercial fleets, public or private campus, parking structures, car dealerships, race tracks

Public assets
Bus depots, utility, sensitive grid applications

Smarter charging

EU portfolio, three phase

Description

DC charger for electric vehicles, CCS2 and CHAdeMO
 Total weight 10 kg backplate + 60 kg main body and cables
 Power supply network: 3 phase 400 V AC +/-10 % (50/60 Hz)
 Connectivity: Cellular connection, 3G / 4G, 2 port RJ45, Ethernet
 Metal Connector/cable holders provided standard with the product



TWB CE 24 C 7-7M-0-0

Rated continuous power (kW)	Rated peak power (kW)	Charging standard	EMC classification	Cable length (m / ft)	Type	Order code	Weight Pkg (1pce) (kg)
22.5	24	CCS2	Class B	3.5 / 12	TWB CE 24 C 3T-7M-0-0	6AGC077815	70
22.5	24	CCS2	Class B	7 / 23	TWB CE 24 C 7T-7M-0-0	6AGC077816	70
22.5	24	CHAdeMo / CCS2	Class B	3.5 / 12	TWB CE 24 CJ 3T-7M-0-0	6AGC077814	70
22.5	24	CHAdeMo / CCS2	Class B	7 / 23	TWB CE 24 CJ 7T-7M-0-0	6AGC077817	70

US portfolio, single phase and three phase

Description

DC charger for electric vehicles, CCS1 and CHAdeMO
 Total weight 10 kg backplate + 60 kg main body and cables
 Power supply network: 1 phase 200 - 240 V AC +/-10 % (60 Hz), 3 phase 480 V AC +/-10 % (60 Hz)
 Connectivity: Cellular connection, 3G / 4G, 2 port RJ45, Ethernet
 Metal Connector/cable holders provided standard with the product






TWB UL 24 C 0-7M-A-0

Rated DC output power 208 V (kW)	Rated DC output power 240 V (kW)	Charging standard	Cable length (m / ft)	Type	Order code	Weight Pkg (1pce) (kg)
Single phase						
19.5	22.5	CCS1	3.5 / 12	TWB UL 24 C 3-7M-A-0	6AGC079380	70
19.5	22.5	CCS1	7 / 23	TWB UL 24 C 7-7M-A-0	6AGC079381	70
19.5	22.5	CHAdeMo / CCS1	3.5 / 12	TWB UL 24 CJ 3-7M-A-0	6AGC079378	70
19.5	22.5	CHAdeMo / CCS1	7 / 23	TWB UL 24 CJ 7-7M-A-0	6AGC079379	70



Rated continuous power (kW)	Rated peak power (kW)	Charging standard	Cable length (m / ft)	Type	Order code	Weight Pkg (1pce) (kg)
Three phase						
22.5	24	CHAdeMo/CCS1	3.5 / 12	TWB UL 24 CJ 3T-7M-0-0	6AGC080248	70
22.5	24	CHAdeMo/CCS1	7 / 23	TWB UL 24 CJ 7T-7M-0-0	6AGC081362	70
22.5	24	CCS1	3.5 / 12	TWB UL 24 C 3T-7M-0-0	6AGC081363	70
22.5	24	CCS1	7 / 23	TWB UL 24 C 7T-7M-0-0	6AGC081364	70

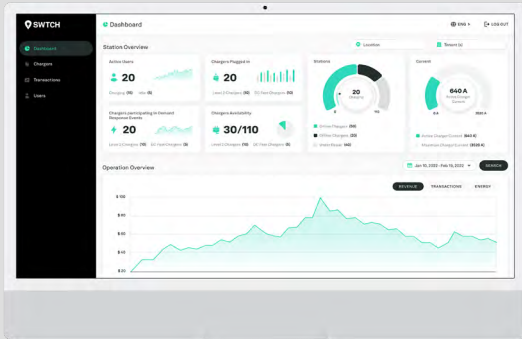
Terra DC wallbox accessories

	Description	Type	Order code	Weight Pkg (1 pce) (kg)
	Connector holder Plastic /cable holders to be ordered separately * Metal cable holders are provided with the product			
	CCS-1	TWB Ext.Con.Hol. CCS1	6AGC076604	4.66
	CCS-2	TWB Ext.Con.Hol. CCS2	6AGC076603	4.14
	CHAdEMO	TWB Ext.Con.Hol. J	6AGC076601	4.24
	Mobile cart including Terra DC wallbox Perfect fit for workshops at car dealers or at bus and truck depots Wheels are made of stainless steel, providing grounding of the cart to the earth The mobile cart is pre-assembled in the factory and delivered as one with Terra DC Wallbox already installed. Total weight: Mobile cart 70 kg + Terra DC wallbox 70 kg CCE inlet connector 63A 5P IP67 AC cable from the wall plug to the mobile cart is not provided with the product			
	Terra DC wallbox CE 24 kWp, 3 phases, CCS, 3.5 m cable, EMC Class B including mobile cart, CE	TWB CE 24 C 3T-7M-0-0 + mobile cart, CE	6AGC102583	140
	Terra DC wallbox CE 24 kWp, 3 phase, CCS, 7 m cable, EMC Class B including mobile cart, CE	TWB CE 24 C 7T-7M-0-0 + mobile cart, CE	6AGC102584	140
				
	Warranty Total warranty time of 3 years (standard warranty 2 years + 1 year) Total warranty time of 4 years (standard warranty 2 years + 2 year) Total warranty time of 5 years (standard warranty 2 years + 3 year)	EVC Extended warranty 3 yr EVC Extended warranty 4 yr EVC Extended warranty 5 yr	6AGC100306 6AGC100307 6AGC100308	- - -

Technical specification

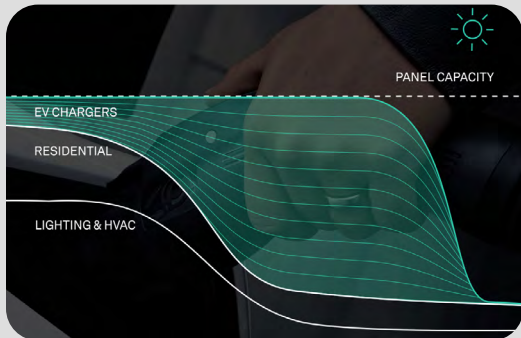
	DC Wallbox 24 kW IEC version	DC Wallbox 24 kW UL version 1-phase	DC Wallbox 24 kW UL version 3-phase
DC output connection			
Charging mode	Type 4: CCS 2, CHAdeMO	Type 4: CCS 1, CHAdeMO	Type 4: CCS 1, CHAdeMO
Number of outputs	Standard: single output CCS2 Optional: dual output CHAdeMO + CCS 2	Standard: single output CCS1 Optional: dual output CHAdeMO + CCS 1	Standard: single output CCS1 Optional: dual output CHAdeMO + CCS 1
Number of simultaneous charging session	Single	Single	Single
Output power rating	0 ... 22.5 kW, 24 kW (peak)	19.5 kW - 208 V 22.5 kW - 240 V	0 ... 22.5 kW, 24 kW (peak)
Output current	60 A DC	60 A DC	60 A DC
Output voltage	CCS: 150 ... 920 V DC CHAdeMO: 150 ... 500 V DC	CCS: 150 ... 920 V DC CHAdeMO: 150 ... 500 V DC	CCS: 150 ... 920 V DC CHAdeMO: 150 ... 500 V DC
Average efficiency at full power	≥ 95 %	≥ 95 %	≥ 95 %
AC input connection			
Earthing system	3P, N, PE	2 wire (e.g. L1 - N, L1 - L2) + PE Note that a neutral wire may not be available.	3P, N, PE
Input current	3-phase, 40 A	100 A	3 phase, 32 A
Input voltage	3-phase 400 V AC +/- 10 %	208 ... 240 V AC two wire +/- 10 %	3 phase 480 V AC +/- 10 %
Input frequency	50 Hz	50 / 60 Hz	50 / 60 Hz
Input protection	External circuit breaker (not Included)	External circuit breaker (not Included)	External circuit breaker (not Included)
Power factor	> 0.96	> 0.96	> 0.96
Harmonic distortion (THDi)	< 8 %	< 8 %	< 8 %
General characteristics			
Dimensions H x W x D	770 x 584 x 294 mm 30.31 x 22.99 x 11.57 inches	770 x 584 x 294 mm 30.31 x 22.99 x 11.57 inches	770 x 584 x 294 mm 30.31 x 22.99 x 11.57 inches
IP rating	IP54	IP54	IP54
IK rating	IK10 (IK08 for HMI)	IK10 (IK08 for HMI)	IK10 (IK08 for HMI)
NEMA enclosure type		NEMA 3 outdoor	NEMA 3 outdoor
Operating altitude	2500 m (8200 ft)	2500 m (8200 ft)	2500 m (8200 ft)
Operating temperature range	-35 ... +45 °C	-35 ... +45 °C	-35 ... +45 °C
Mounting	Wall or floor using a pedestal	Wall or floor using a pedestal	Wall or floor using a pedestal
Emergency stop button type	Push button	Push button	Push button
Electromagnetic compatibility	IEC 61000-6-3 Class B, suitable for residential environment	EMC Class A	IEC 61000-6-3 Class B, suitable for residential environment
User Interface			
Screen type	7 LCD touchscreen display	7 LCD touchscreen display	7 LCD touchscreen display
Languages	English as standard Others languages available via software configuration	English as standard Others languages available via software configuration	English as standard Others languages available via software configuration
Standby indicator	Yes	Yes	Yes
Connectivity	Cellular connection 3G/4G 2 port RJ45 Ethernet	Cellular connection 3G/4G 2 port RJ45 Ethernet	Cellular connection 3G/4G 2 port RJ45 Ethernet
Communication protocol	OCPP 1.5 / 1.6	OCPP 1.5 / 1.6	OCPP 1.5 / 1.6
User authentication	RFID (ISO 14443 A + B to part 4 and ISO/IEC 15693 Mifare, NFC, Calypso, Ultralight, PayPass, HID; and more) On-screen PIN code authentication OCPP support of ISO 15118 Plug&Charge is according to publicly available and commonly recognized implementation whitepaper Please contact your ABB local organization	RFID (ISO 14443 A + B to part 4 and ISO/IEC 15693 Mifare, NFC, Calypso, Ultralight, PayPass, HID; and more) On-screen PIN code authentication OCPP support of ISO 15118 Plug&Charge is according to publicly available and commonly recognized implementation whitepaper Please contact your ABB local organization	RFID (ISO 14443 A + B to part 4 and ISO/IEC 15693 Mifare, NFC, Calypso, Ultralight, PayPass, HID; and more) On-screen PIN code authentication OCPP support of ISO 15118 Plug&Charge is according to publicly available and commonly recognized implementation whitepaper Please contact your ABB local organization
Configuration			
Software update	OCPP 1.6, ABB web portal	OCPP 1.6, ABB web portal	OCPP 1.6, ABB web portal
Remote control and configuration via ABB Ability connected services	Authentication Payment Monitoring Remote diagnostic Repair	Authentication Payment Monitoring Remote diagnostic Repair	Authentication Payment Monitoring Remote diagnostic Repair
Remote control and configuration via local service tool	Please contact your ABB local organization	Please contact your ABB local organization	Please contact your ABB local organization
Certification and standards			
Codes and standards	EN 61851-1 EN 61851-2 UL 2202	EN 61851-1 EN 61851-2 UL 2202	EN 61851-1 EN 61851-2 UL 2202
Certification	CE, EMC Class B	UL, FCC, EMC Class A	UL, FCC, EMC Class B
Warranty	24 months Warranty extension possible	24 months Warranty extension possible	24 months Warranty extension possible

EV Charging for Busy Buildings



SWTCH's EV charging management platform is designed specifically for multi-tenant buildings

By leveraging state-of-the-art software technology, SWTCH OST™ enables unit owners and building management to successfully deploy and manage a cost-effective EV charging system that works for your EV charging system today, and in the future.



SWTCH's Intelligent load manager can manage up to 10x more chargers on your existing capacity

SWTCH Control™ intelligently distributes energy to the chargers based on the real-time capacity available on the circuit, panel and/or building, allowing buildings to safely install up to 10 times the number of chargers on your existing electrical infrastructure.



A first-class charging experience - complete with 24/7/365 driver support

Our flexible charging experience ensures EV drivers can get the charge they need, when and how they want it:

- iPhone & Android app
- No download required via SWTCH's in-browser app
- Tap-and-go charging with our complimentary RFID card

Our team of live customer support agents are available via phone and email around the clock to ensure your chargers are working well and drivers have a delightful charging experience, every time.